

+971503815136

GEO CIVIL FOUNDATION
CONTRACTOR- U.A.E.

**PILING AND FOUNDATIONS
SPECIALIST**

<https://geocivilsr.me/>

GEO CIVIL CONTRACTOR



PREQUALIFICATION DOCUMENTS

TABLE OF CONTENTS

I. COMPANY PROFILE

- A. About the organization
 - A.1 Organizational Chart
 - A.2 Contact Information
- B. Core Competence
- C. Vision, Mission & Philosophy
- D. Quality Policy
- E. Environmental, Health and Safety Policy
 - E.1 EHS Policy Statement
 - E.2 Insurance Policy
 - E.3 Equipment Safety
 - E.4 Operator's Quality Certificate

II. BUSINESS ACTIVITIES

- A. Details of Business Activities
- B. Brief Description

III. RESOURCES

- A. Financial
- B. Human Resources
- C. Machinery & Equipment
 - C.1 Equipment list
 - C.2 Equipment Photos

IV. EXECUTED PROJECTS

- A. Application/Market Sectors
- B. Installation Photos

V. PRINCIPAL & SUB CONTRACTORS

COMPANY PROFILE

A. ABOUT THE ORGANIZATION

With nearly 10 years' tradition of service and satisfaction, **GEO CIVIL FOUNDATIONS** aims for the highest standards in design, execution, site safety, efficiency and environmental management. This is achieved through continuous training and development in order to find solutions to foundation problems.

We Have a ground engineering solution company with remarkable expertise in the complex fields of piling and foundations. Established in Egypt in 2011 as **ECAS Foundations Works**, but the rapid growth and dramatic change in the infrastructure of the U.A.E. had brought about the inception of GEO CIVIL Foundations in Dubai in 2015. Since then, the organization has committed to innovation and executes projects of all sizes. As a company, it embraces new trends in working with clients. Its objective is not only to complete projects successfully to the highest standards, but most significantly to add value to its client's businesses. We have experience facilitates a Design/Build approach to projects and allow timely collaboration with contractors, consultants and end-users.

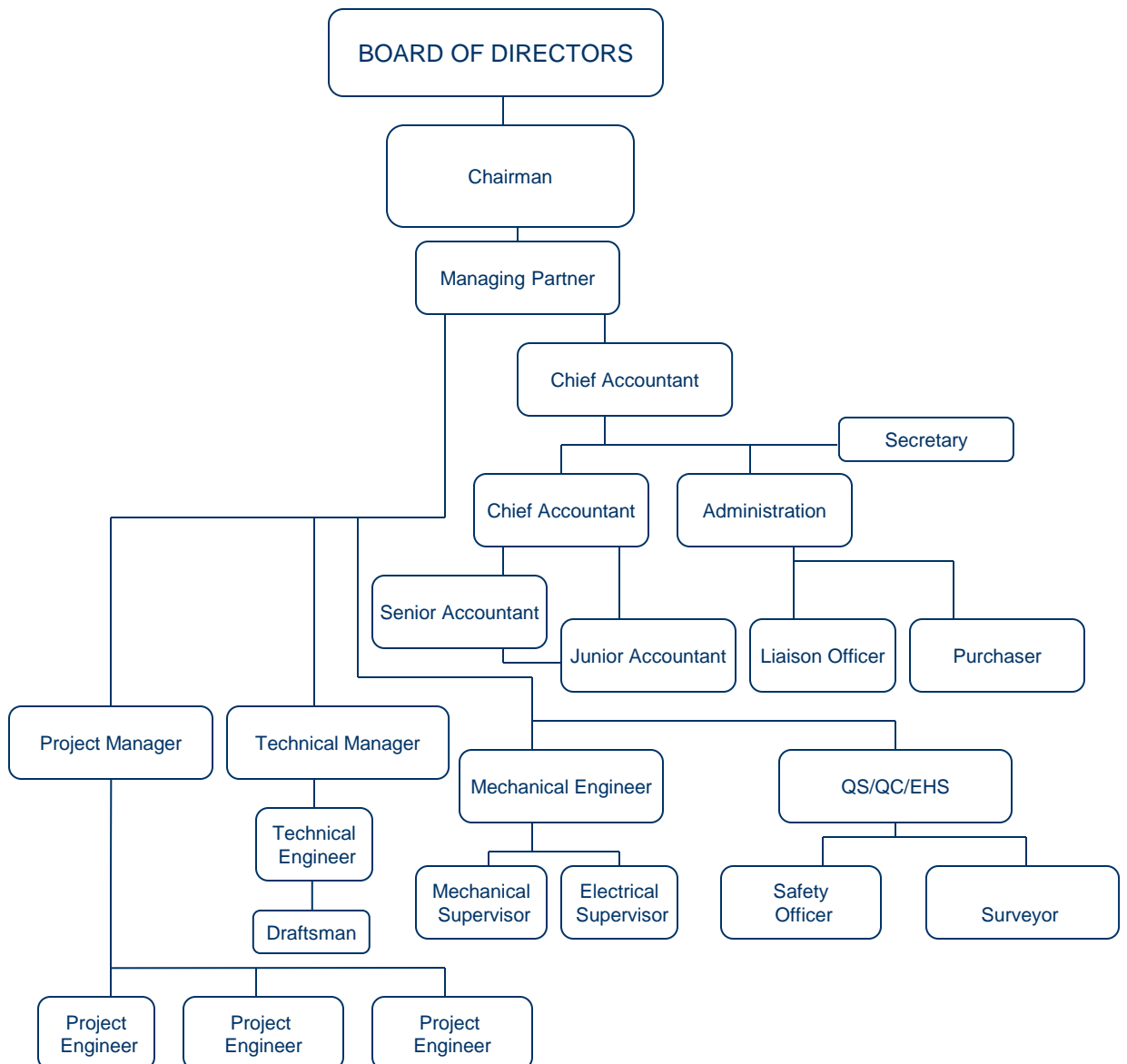
GEO CIVIL employs qualified professionals who manage the site with ease, confidence and professionalism. The company's resources are insured against Contractor's All Risks, Employer's Liability, Third Party Liability and Machinery All Risks.

GEO CIVIL expertise lies in solving its clients' ground engineering problems such as retaining soil structures, building marine jetties, piling and foundations for high-rise buildings, improving ground conditions and recently, the company had formed its Surveying Department in support of the construction division.

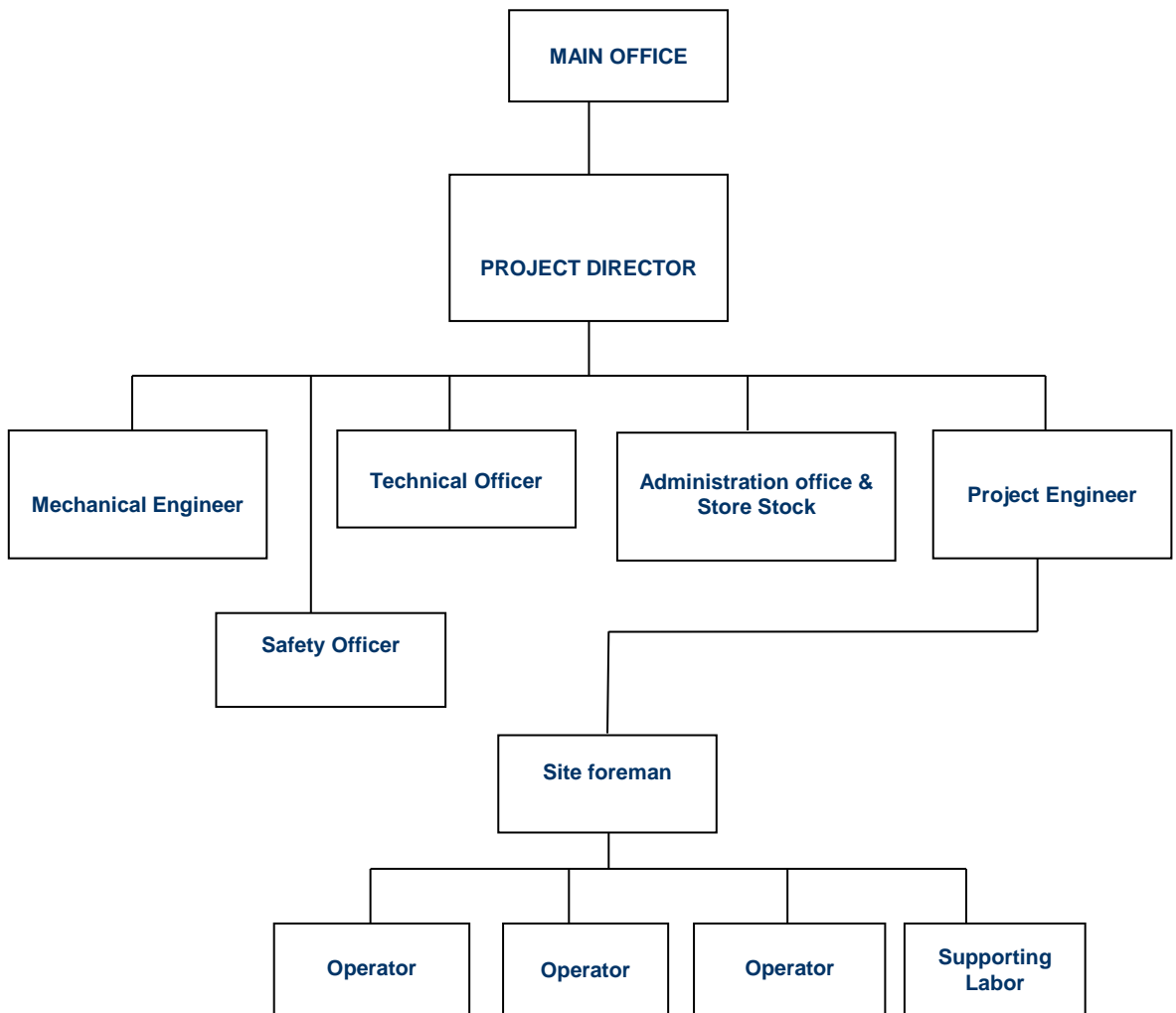
The company's success and continuous growth depends to a great extent to its use of professional, qualified and experienced personnel. GEO CIVIL places immense emphasis on personal service and partnering solutions coupled with the knowledge and capabilities to solve foundation and site problems with accuracy and reliability. The company thrives on projects that are difficult. These projects help to generate creativity and team building that has led to our success. Its clients are assured that for every our job carries, it works the hardest to ensure a successful completion and hand-over. Its approach to each project is one of efficiency, economy and ingenuity. Geo Civil faces each day with a different level of challenge and firmness in its commitment to the industry.

COMPANY PROFILE

A.1 ORGANIZATIONAL CHART



A.1.1 PROJECT ORGANIZATIONAL CHART



COMPANY PROFILE

A.2 CONTACT INFORMATION

<i>UNITED ARAB EMIRATES</i>	<i>EGYPT & OTHER GCC COUNTRIES</i>
GEO CIVIL FOUNDATION P. O. Box 21555 Dubai, U.A.E. Tel. No. : +971 503815136 Fax No.: +971 4 3362117 E-mail : info@geocivilsr.me Website: https://geocivilsr.me/	TECHNICAL STAFF P. O. Box 21555 Dubai, U.A.E. Tel. No. : +971 503815136 Fax No.: +971 4 3362117 E-mail : info@geocivilsr.me Website: https://geocivilsr.me/

COMPANY PROFILE

B. CORE COMPETENCE

GEO CIVIL CONTRACTOR

“committed to service and customer ‘s satisfaction”

At Our Company , we pride ourselves on our versatility, strength in engineering and construction concepts, hard work, honesty, teamwork, excellent customer relationship, collaboration, open communication and the ability to deliver on a timely schedule.

WHY Geo Civil ??? WHAT SETS IT DIFFERENT THAN THE REST OF THE PILING COMPANIES....

1. The company gives emphasis on the four (4) main pillars of success : ***“TECHNOLOGY, PRODUCTIVITY, RELATIONSHIP AND SERVICES.”***
2. We focuse in making site personnel as productive as possible to get each task handled with the lowest cost but with the most efficient personnel available.
3. Focusing on the technology side of the business, management ensures that it applies the latest standards in piling and foundation design and construction concepts.
4. Maintains experienced engineers, well trained operators and strong design background that propels Geo civil to succeed in this region.
5. Geo civil builds its business around productivity - pre-plans every job, compares actual performance against pre-determined standards, coordinates with consultant and main contractor and monitors site performance against overall project schedule.

GEO CIVIL CONTRACTOR is committed to excellent service and exceptional customer’s satisfaction

COMPANY PROFILE

C. VISION, MISSION, PHILOSOPHY & VALUES

“OUR COMMITMENT TO SERVICE AND CUSTOMER’S SATISFACTION”

VISION:

GEO CIVIL CONTRACTOR envisions:

- To be a leading piling and foundation solutions provider at international standard.
- Strong commitment to investing its resources in order to maintain its position as market leader.
- Build on its long term relationship and establish two way commitments.

MISSION AND PHILOSOPHY:

- To become one of the largest, dynamic, dependable, most innovative and safest specialty foundation contractors, providing its clients with high quality services consistent with or ahead of specific requirements and schedules.
- To understand customer’s requirements and work with them to exceed their expectations.
- To address quality, on-time services and cost effective piling and foundation techniques.
- To ensure that its employees are properly trained and developed to meet the company’s objectives.
- To generate sufficient profit to guarantee future security and stability.
- To forge mutually beneficial supplier relationships.

BUSINESS PRINCIPLES AND VALUES

- Being proactive and continuously share its knowledge, experience and innovations with the clients in order to add value to the services at all times.
- Being consistent in all its business dealings in order to achieve the highest level of professional and ethical standards.
- To give high accord to customers’ relationship in order to maintain their continuous patronage.

COMPANY PROFILE

D. QUALITY POLICY

GEO CIVIL CONTRACTOR a leading piling and foundation company is fully committed to the quality policy that ensures the highest level of customer satisfaction at all times, ensuring its position in the market.

One of the primary objectives of Geo Civil is to achieve the highest standards of quality in its operations and all business practices without boundaries and compromises. The company's goal is to continually improve its performance, while offering its costumers quality ground engineering services at cost effective and competitive market rates.

Quality and on-time performance is one of the cornerstones of the company and is considered a personal responsibility of all the employees. In order to maintain quality performance at the highest level at all times, Geo Civil is guided by the following principles:

- 1.To strictly abide with international standards in ensuring the highest performance requirements by providing excellent design/build approach.
- 2.To fulfill and exceed customer needs and expectations by delivery quality services in a consistent and timely manner while ensuring that their requirements are fully identified and met.
- 3.To cultivate and maintain the commitment to continual improvement, identifying potential errors and weaknesses and take the necessary action to eliminate them.
- 4.Communicate its business goals and objectives to each and every employee enabling them to assist in effectively achieving the same.
- 5.Promote a working environment where continuous training and development is provided to every employee to ensure that they understand the company's policies and procedures, which are periodically reviewed to be able to perform their duties effectively.
6. To constantly review and improve its business practices to attain its goals and objectives.

GEO CIVIL CONTRACTOR is committed to operate continuously in line with the above quality standards and will take every effort to obtain the necessary Quality approval consistent with our customer requirements.

COMPANY PROFILE

E ENVIRONMENTAL, HEALTH & SAFETY POLICY

E.1 EHS POLICY STATEMENT

The vision of Quality and EHS excellence of **GEO CIVIL CONTRACTOR** is shaped by the core values of dedication, integrity, honesty, accountability, trust, mutual respect, transparency and teamwork.

We strongly believe that accidents do not happen, they are caused and therefore, it is each person's responsibility to ensure that safety is an integral part of every activity.

In Our Company mission of protecting the people, properties and the environment, they do believe that EHS is an essential part of the management and decision-making process. Hence, Geo Civil is guided by the principles of:

1. Valuing human life.
2. Developing effective policies and procedures that provide safety for the workplace, and the environment while providing flexibility to meet the needs of the business.
3. Geo Civil is committed to provide a safe, injury-free workplace by integrating safety in its daily business decisions and processes. Every employee is responsible for his/her safety and of those around them. It motivates employees to achieve zero work related incidents, injuries through proper training and supportive work management., and we work together to identify and eliminate health and safety risks at the workplace.
4. The company encourages all of its employees to adopt a healthy, safe and environmentally conscious lifestyle both at home and at the work front.
5. Geo Civil fully supports its strong commitment and dedication for innovative designs that are safe, efficient and minimized impact to the environment.

Overall, Geo Civil is committed to continually improve its EHS standards through learning, sharing and participation in continuous improvement programs and or technologies that advance it EHS goals. The company fosters open and transparent communication in reporting its performance, goals and objectives in order to generate sustainable EHS improvement and value.

Geo Civil will continue to maintain appropriate controls, including periodic review to ensure that this policy is being followed strictly. Moreover, to encourage, recognize and reward positive contribution to the advancement and effective implementation of its EHS goals and standards.

COMPANY PROFILE

E. ENVIRONMENTAL, HEALTH & SAFETY POLICY

E.2 INSURANCE POLICY

CONTRACTOR'S ALL RISKS/TPL

COMPANY PROFILE

E. ENVIRONMENTAL, HEALTH & SAFETY POLICY

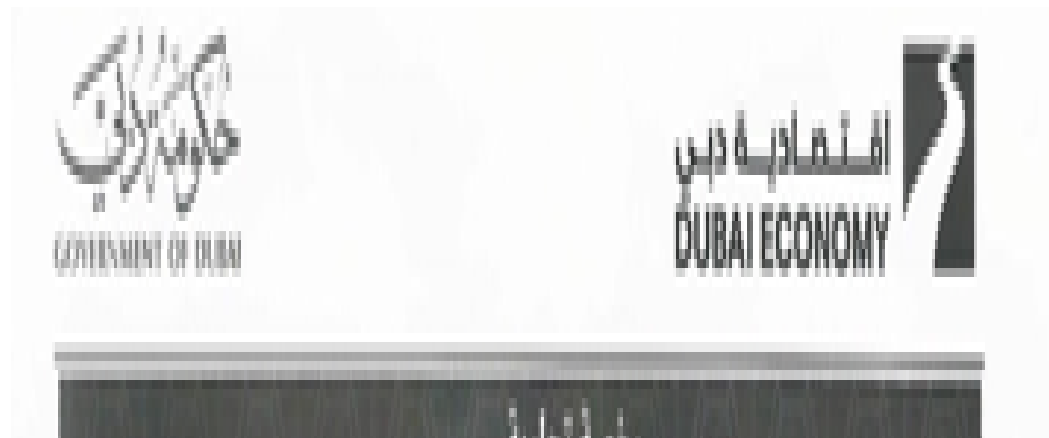
E.4 OPERATOR'S QUALITY CERTIFICATE



COMPANY PROFILE

F. BUSINESS ENTITY DOCUMENTATIONS

F.1 Commercial License



BUSINESS ACTIVITIES

A. DETAILS OF BUSINESS ACTIVITIES

A. EXCAVATION RETENTING SYSTEM

Geo Civil has the resources and the capabilities to design and install excavation retention systems to facilitate excavation up to desired depth using:

1. Diaphragm Wall
2. Contiguous Pile
3. Secant Pile
4. Sheet Pile
5. Soldier Pile (Concrete & Wood Panels)
6. Slope Protection

B. CAST-IN-SITU-PILE

1. Bored Pile (varies from 2500mm to 500mm dia for a depth up to 30m)
2. Continuous Flight Auger Pile (pile dia varies from 1200mm to 500mm for a depth up to 30m)
3. Micro pile (pile diameter varies from 100mm to 350mm for length up to 25m)

C. SOIL IMPROVEMENT

1. Impact Pier System
2. Stone Column Vibro Replacement
3. Soil Compaction
4. Soil Injection

D. GROUTING

1. Soil Cement Stabilization
2. Rock Cement Grout
3. Cavity Injection
4. Chemical Injection
5. Compaction

E. DEWATERING

1. Deep Well/Well Points

F. ANCHORAGE

1. Ground Anchor
2. Soil Nailing

BUSINESS ACTIVITIES

B. BRIEF DESCRIPTION

A. EXCAVATION RETENTION SYSTEM

1. Diaphragm Wall

Commonly used in congested area for retention systems and permanent foundation works. They can be installed in close proximity to existing structures with minimal loss of support to existing foundations.

Diaphragm wall (also known as slurry wall) are basically deep trenches excavated in the soil into which reinforced concrete is placed. Excavation is accomplished by digging panels into the ground, while trench stability is maintained using bentonite or polymer slurries. Once excavated, three-dimensional reinforcement is set in the trench and followed by the placement of structure grade concrete using tremie pipes. The result is a structural wall system that not only provides temporary earth support, but also provides permanent foundation system.



2. Contiguous Pile

Closely spaced bored piles can be used to form a retaining wall, perhaps for the construction of a deep basement or a cut and cover tunnel. The piles may be constructed so that they virtually touch each other (contiguous)



3. Secant Pile

Every other pile may be constructed, with their centers less than two diameters apart. In fill piles are then bored, cutting into the adjacent piles to form a continuous structure. To aid construction, the first set of piles may be cast with a lower grade of concrete. These may not be load-bearing and act as “SEALS” between the main load bearing piles.

4. Sheet Pile

Sheet piles wall are constructed by driving steel sheets into a slope or excavation. Their most common use is within temporary deep excavations. They are considered to be most economical where retention of higher earth pressure of soft soil is required.

An important advantage is that they can be driven in depths below the excavation bottom and so provide a control to heaving in soft clays or piping in saturated sand. Sheet piles are more costly and less adaptable to hard driving conditions particularly where boulders or irregular rock surfaces occur.



BUSINESS ACTIVITIES

B. BRIEF DESCRIPTION

5. Soldier Pile

Constructed using wide flange of steel H sections spaced about 2 to 3m apart and are driven prior to excavation. It consists of multiple piles spaced apart from each other to support a change of elevation. The piles are usually H beams installed in drilled shaft. Timber lagging is then installed between the H beams to restrain the soil between the piles. Deeper excavations may require tiebacks to be installed at the piles for additional support.

Soldier pile shoring is very versatile because the size of the piles and the spacing between them can be adjusted to site soil condition. In many cases, this is the most economical method of shoring.

B. CAST-IN-SITU LOADED PILE

1. Bored Pile

Another type of reinforcement concrete pile which is used to support high building which has heavy vertical load. Bored pile is a cast-in-place concrete pile where the bored piles have to be casted in the construction site while other concrete piles are pre-cast concrete pile casted in the factory. Machine used for this pile method is a bored piling machine which has specially designed drilling tools, bucket and grabs, which can drill into 50meters depth of soil.

Bored piling is best for tall buildings or massive industrial complexes, which requires foundations which can bear the load of thousands of tons. Bored pile drilling method has little vibration and lower noise level.

2. Continuous Flight Auger Pile (CFA)

CFA Piles are formed by drilling a continuous flight auger into the ground. The sides of the hole are supported at all times by the soil filled auger, eliminating the need for temporary casing or bentonite slurry. Upon reaching the required depth, sand element grout or concrete is pumped down the hollow stem as the auger is steadily withdrawn. Reinforcement is placed immediately after withdrawal of the auger.

There are numerous benefits to this approach, including immediate replacement, zero subsidence, lack of free water within the shaft, computer monitoring of depth and concrete placement and no need for casing/slurry.

BUSINESS ACTIVITIES

B. BRIEF DESCRIPTION

3. Micro pile

Micro piles are also called mini piles. Micro piles are normally made of steel with diameters of 100 to 200mm. A typical micro pile construction involves drilling the pile shaft to the required depth, placing the steel reinforcement, initial grouting by tremie and placing additional grout under pressure where applicable.

The advantages of micro pile are high carrying capacity, less site constraint problems and self sustained operation. This piling system is therefore attractive to both the client and the foundation designer. Apart from the light compact drilling rigs, other auxiliary equipment, like grout mixer and grout pump is very compact in size. Where the demands of the job require piles in low headroom or otherwise restricted areas and for specialty or smaller scale projects, micro piles can be ideal.

C. SOIL IMPROVEMENT

1. Vibro Displacement (Stone Column)

The impact system uses vertical displacement **Aggregate Piers** to reinforce good to poor soil, including loose sand, silts, mixed soil layers, uncontrolled fill and soil below the ground water table.

The unique installation process displaces soil during installation and utilizes vertical impact ramming energy to construct vertical displacement RAPS, which exhibit unsurpassed strength and stiffness. The installation procedure produces lateral compaction and pre-stressing and pre-straining of the surrounding matrix soil. RAP solutions are designed to provide total and differential settlement control and increase bearing support to meet project requirements.

BUSINESS ACTIVITIES

B. BRIEF DESCRIPTION

2. Stone column replacement

A ground improvement technique to improve the load bearing capacity of the soil. The stone columns consist of crushed coarse aggregates of various sizes. The ratio in which the stones of different sizes will be mixed is decided by design criteria. Aggregates are placed in the soil by using either dry or wet top feed or bottom feed vibrators which are forced into the ground. The aggregates are then allowed to take the place of the displaced soil which exert pressure on the surrounding soil hence helping to improve the soil load bearing capacity, reduces foundations settlement, mitigates liquefaction potential and improve shear resistance.

3. Soil compaction

A method of mechanically increasing the density of soil. The action of the vibrator, usually accompanied by water jetting, reduces the inter – granular forces between the soil particles, allowing them to move into a denser configuration. If performed improperly, settlement of the soil could occur and result in unnecessary maintenance costs or structure failure.

The advantage of soil compaction are – increases load bearing capacity, prevents soil settlement, provides stability, reduce water seepage, swelling and contraction.



RESOURCES

A. Financial

With **GEO CIVIL CONTRACTOR** bringing together a diverse background of Ground Engineering expertise, its solid commitment to excellent service and customer's satisfaction, management had instituted rapid growth in the business that ensured financial progression and stability of the organization.

Practicing a financial philosophy that reinvents profits back into the company, **GEO CIVIL CONTRACTOR** enjoys substantial benefits with significant bonding capacity available for projects requiring such performance.

The company's steadfast financial security adds value to the company's capability to allocate funds efficiently, and to finance projects, no matter of the size and complexity. Maintaining sound financial management is one of the key strength of **GEO CIVIL CONTRACTOR** that sets its capabilities to sustain and complete projects on a timely manner.

GEO CIVIL CONTRACTOR' financial position and results of operations are annually examined by independent and experienced auditors, as part of its internal control program.

RESOURCES

B. Human Resources

GEO CIVIL CONTRACTOR fosters the philosophy of continuous staff training and development. It recognizes human resources as significant asset of the company. Thereby, it acknowledges the value and contribution of each individual in many ways. Geo Civil bases its employment on merit, qualifications and abilities. As equal employment opportunity employer who does not discriminate against any individual based on race, color, religion, sex, nationality, age, disabilities etc. All potential employees are screened on the basis of the company's standard recruitment policy.

Recognizing the value of human resources **GEO CIVIL CONTRACTOR** plays emphasis on competence, ability, skills and knowledge. The company encourages rewards and incentives for exceptionally good work among others, as human excellence plays a significant role in achieving the company's objective. Human resources constitute the most valuable element in GEO CIVIL CONTRACTOR's asset portfolio. As such, the organization has already defined its strategic purpose optimizing the allocation and use of its human assets, promoting an effective hiring strategy, performing constant review of human resources capacity in relation to strategic purpose and most of all following a fair and reasonable wage-benefit administration policy.

RESOURCES

C. EQUIPMENT & MACHINERY

C.1 EQUIPMENT & MACHINERY DETAILS

With its primary commitment to excellent service and customer satisfaction, **GEO CIVIL CONTRACTOR** has invested a great deal of fund for the acquisition of equipment and machinery in order to carry out it's business objective.

	TYPE		QUANTITY	
I. SOILMEC				
1.	SOILMEC	SR70	2009	1
2.	SOILMEC	SR60	2008	1
3.	SOILMEC	R622	1996	1
II. CASSAGRANDE				
1.	CASSAGRANDE	C800	2004	1
	1.a SPECIAL SHORT MAST 8m HEIGHT			
2.	Casagrande	HD 180	2003	1
III. IMT				
1.	IMT	AF180D	2008	2
2.	IMT	AF120	2005	1
IV. ABI				
1.	ABI SHEET PILE DRIVING MACHINE		1996	1
V. MICROPILE				
1.	CASSAGRANDE	C6	2007	1
2.	CMV	900		1

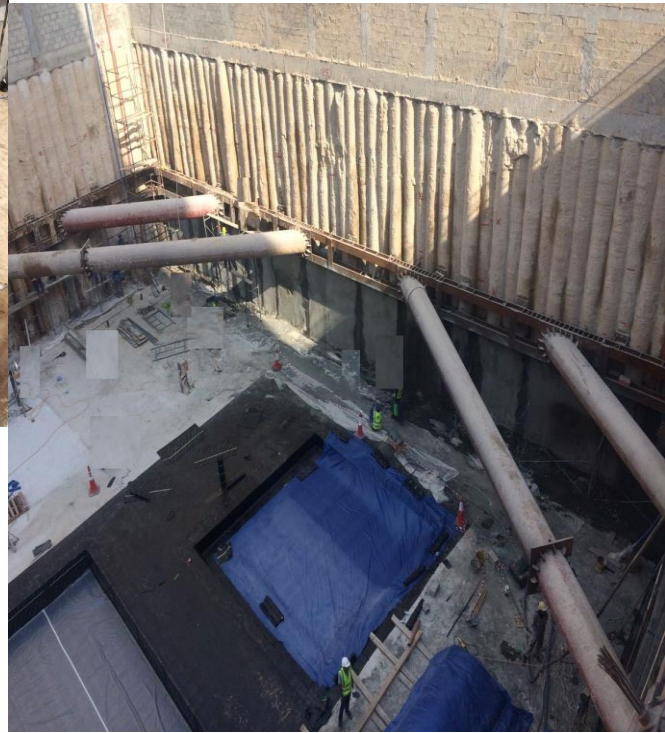
RESOURCES

C. EQUIPMENT & MACHINERY

C.1 EQUIPMENT & MACHINERY DETAILS

	<i>TYPE</i>	<i>QUANTITY</i>
VI. VIBRATORS		
1.	PTC 25 HYDRAULIC VIOBRATOR	1
2.	PTC 60 ELECTRICAL VIOBRATOR	1
3.	ICE 100 HYDRAULIC VIBRATOR	1
4.	ICE 815	2
VII. DRIVING HAMMER		
1.	DELMAG D36/D45	1
2.	DELMAG D22	1
VIII. CRANES		
1.	HITACHI CRANE KH180	3
2.	HITACHI CRANE KH 230	1
3.	PRIESTMAN	3
3.	LINK BELT 60T	1
IX. CONCRETE PUMP		
1.	PUTZMEISTER	3

Photos of Project



RESOURCES

C. EQUIPMENT & MACHINERY

C.2 EQUIPMENT & MACHINERY PHOTOS

I. SOILMEC



RESOURCES

C. EQUIPMENT & MACHINERY

C.2 EQUIPMENT & MACHINERY PHOTOS

III. IMT



RESOURCES

C. EQUIPMENT & MACHINERY

C.2 EQUIPMENT & MACHINERY PHOTOS

IV. ABI



ABI SHEET PILE DRIVING MACHINE

RESOURCES

C. EQUIPMENT & MACHINERY

C.2 EQUIPMENT & MACHINERY PHOTOS

V. MICROPILE



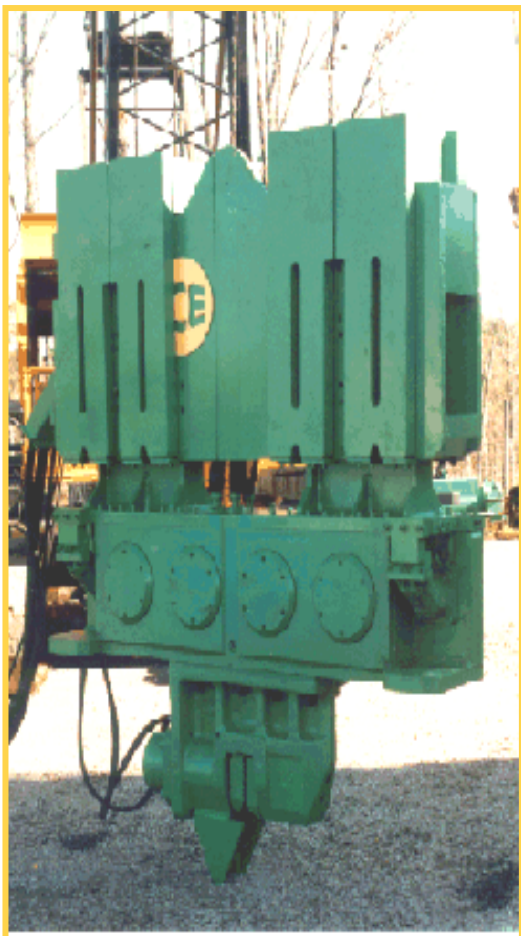
CASSAGRANDE

RESOURCES

C. EQUIPMENT & MACHINERY

C.2 EQUIPMENT & MACHINERY PHOTOS

VI. VIBRATORS



RESOURCES

C. EQUIPMENT & MACHINERY

C.2 EQUIPMENT & MACHINERY PHOTOS

VIII. CRANES



Crawler Crane

EXECUTED PROJECTS

A. APPLICATION / MARKET SECTORS – U.A.E.

I Executive Retaining System

1. Contiguous pile Wall

LN	Project Details
A	Residential / Commercial Building for 3B+G+3P+14F, International City DUBAI
B	B+G+1 , 394-811 (E-75A) at Emirates Hills 3rd
C	2B+G+11+Gym Office Building Al Barsha, Dubai
D	B+G+M+4 Typical Commercial/ Residential Building at Al Muteena, Dubai
E	B+G+2 Mosque Plot No. 112-352 at Al Ras
F	B+G+2 Building at Hor Al Anz
G	Parkview Hotel 2B+G+10, in Dubai

EXECUTED PROJECTS

A. APPLICATION / MARKET SECTORS – U.A.E

I Executive Retention System

2. Secant pile

LN	Project Details
A	West Avenue Tower 2B+G+31 , Dubai Marina, U.A.E,
B	Enabling Works for 3 Nos 4B+G+12 Retail & Office Buildings
C	Maimoon Towers 3B+G+4P+45 Floors (Tower I) & 30 Floors (Tower II) Residential/Commercial Tower Jumerah Village Dubai
D	R882/2 - Improvement of Al Safooh Area Road Network Roads R3 & R5
E	International Financial Hotel 4B+G+5P+HC+15 Sharjah
F	3B+G+M+7+R Building , Dubai
G	Underpass Shoring Work at Ras Al Khor
H	(B+G+23) in Nahda, sharjah

EXECUTED PROJECTS

A. APPLICATION / MARKET SECTORS - U.A.E

I Executive Retention System

2. Secant Pile

LN	Project Details
K	(B+G+12) In Barsha-Dubai
L	(G+12) Bldg. in Ajman
M	Shore Line Apartment at Jumerah Palm, Dubai
N	(2B+G+3+GYM), Dubai

3. Sheet pile

LN	Project Details
A	Palazzo Versace & D1 Tower
B	Palazzo Versace & D1 Tower – Boring of wells
C	Construction of Sewerage Connections and Related Works In Abu Dhabi Island and Main Land - Phase IV

EXECUTED PROJECTS

A. APPLICATION / MARKET SECTORS - U.A.E

I Executive Retention System

4. Soldier Beam

LN	Project Details
A	Al Tayer Villa, Dubai
B	Construction of Filling Station for ADNOC at H.H. Sheikh Tahnoon Palace, Abu Dhabi
C	Demolition & Re-construction of two filling Stations (Al HOSN & AL MANHAL)
D	Repton School Nad Al Sheba, Dubai
E	R881/3B- Comprehensive Improvement of the Parallel Road (Contract 3B) Pump Station DUBAI
F	Air Arabia Studio Apartment 1 & 2- Sharjah AirPort
G	Residential / Commercial Building for B+G+6 Floors at Al warqa 1 st , Dubai
H	B+G+1 Villa at Al Khawaneej 1st, Dubai
I	B+G+11 & 12 Floors Residential Building at Al Nadha Second, Dubai

EXECUTED PROJECTS

A. APPLICATION / MARKET SECTORS - U.A.E

I Executive Retention System

4. Soldier Beam

LN	Project Details
1	2B+G+14 at Comfort Inn Hotel, Installation of soldier beam
2	(B+G+M+4+Roof) Building on at Al muteena, Dubai
3	Commercial + Residential Building (2B+G+6+GYM)
4	B+G+1 Supermarket
5	Up Town City at Mirdif, Dubai
6	B+G+1 Commercial/Office on Al Manara Dubai
7	1B+G+14 TYP +Pool+ Roof at Sport City

EXECUTED PROJECTS

A. APPLICATION / MARKET SECTORS - U.A.E

II Cast-in-Sites Pile

1. Bored pile

LN	No. of piles	Pile Diameter	Project Details
A	120	1000&1200mm	Hospital Dubai (B+GF+3 Hospital Building - Phase 1
B	95	800&1000mm	Piling Works for Dream Tower (4B+GF+40+2MECH+Roof)
C	250	600&850mm	Development of Internal Roads in Abu Alabiad Island
D	150	1000mm	Jebel Ali Sewage Plant
E	280	1500&1000&800	G+6 Lease Office Building Plot No. P 565-01 Hamriya Port. Duba
F	100	800	R800/5 Ras Al Khor, Double Decking Project
G	85	600	G+M+6 TYP Floor Ajman
H	27+21	600 mm & 750 mm	(G+8) Bldg. on Plot No.11/5 at Ajman

EXECUTED PROJECTS

A. APPLICATION / MARKET SECTORS - U.A.E

II Cast-in-Sites Pile

3. Micro Pile

LN	No. of piles	Pile Diameter	Project Details
A	250	Anchors 150	Tie Back Anchor Works for 2B+G+10 Floor Commercial / Residential Building
B	85	Anchors 150	Capital Tower – Package 2100 – Anchor Works

EXECUTED PROJECTS

B. INSTALLATION PHOTOS



**Shore line Apartment
Fujairah**

EXECUTED PROJECTS

B. INSTALLATION PHOTOS



Typical Floors at Al Muteena, Dubai

EXECUTED PROJECTS

B. INSTALLATION PHOTOS



(G+2P+10+P Bldg.) PILE LOAD TEST

EXECUTED PROJECTS

B. INSTALLATION PHOTOS



Lateral Pile Load Test

EXECUTED PROJECTS

B. INSTALLATION PHOTOS



EXECUTED PROJECTS

B. INSTALLATION PHOTOS



U-Beam Shoring Work

PRINCIPAL & SUB CONTRACTORS

Geo Civil Contractor abides with the philosophy of working hand-in-hand with pre-approved suppliers and sub-contractors. It builds strong, long-lasting relationship on the basis of mutual respect, trust and integrity, which has made the relationship resilient. It inculcates to partner with its principal and subcontractors in achieving its commitment to its client.

Geo Civil offers opportunities for sub-contractors, who are key components of the services it offers to its clientele. Sub-contractors qualifications and credibility are verified to ensure that they share in Geo Civil's commitment to quality workmanship, safety, timely completion of its projects and most specifically customer's satisfaction.

Realizing the significance of supplier/ subcontractor relationship management to the service of the business, Geo Civil maintains a balance of control in its association with them. It works hard to maintain the efficiency & reliability of its supply network that positions Geo Civil above others in the market. Despite the existence of adverse effects in the economic situation, Geo Civil ensures that vendors / subcontractors are paid in accordance with its agreement in order to promote a harmonious relationship. Geo Civil acknowledges that by doing so, it ultimately affects the company's competitiveness and credibility in the market.

To name a few of the key principals and sub contractors who all these years had partnered Geo Civil in accomplishing its commitment to its clients:

I. REINFORCEMENT STEEL/U BEAMS

1. Cicon Building Materials
2. Steel
3. Steelfab
4. Materials Trading LLC

**PILING AND FOUNDATIONS
SPECIALIST +971503815136
<https://geocivilsr.me/>**

PRINCIPAL & SUB CONTRACTORS

II. CONCRETE MIX

1. Universal Concrete Products Ltd. Co. (LLC)
2. AL FALAH READY MIX
3. CEMEX
4. Golden Ready Mix

III. CONCRETE PANEL

1. Mammut Technocrete F.Z.E
2. Dubai Precast LLC

IV. EXCAVATION SUB CONTRACTOR

1. Ghassan Transport
2. Al Sadaqa Transportation
3. Shaheen Cement Products Factory LLC

V. DEWATERING

1. Action Dewatering
2. WJ Dewatering Limited
3. Hytech International
4. Strong Plant

**PILING AND FOUNDATIONS
SPECIALIST +971503815136
<https://geocivilsr.me/>**